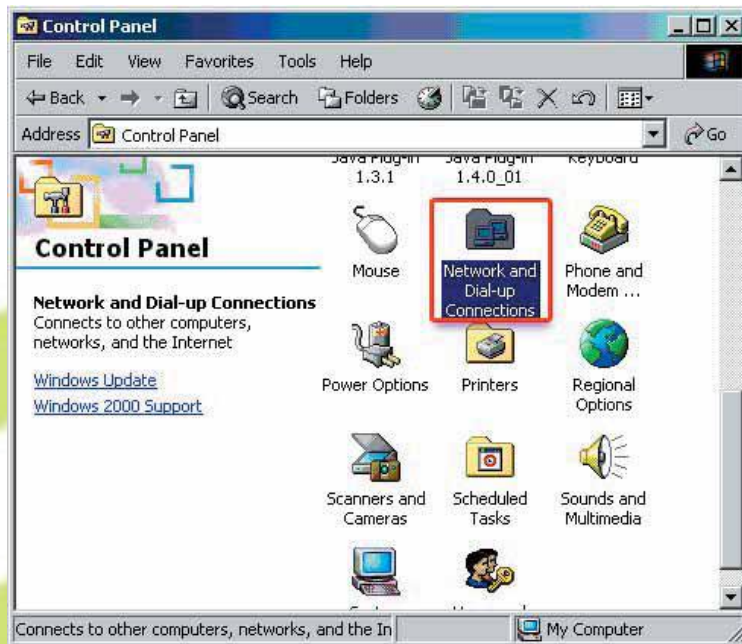


Setup Guide for E-Vision Dial up Connection for Windows 2k

STEP 1:

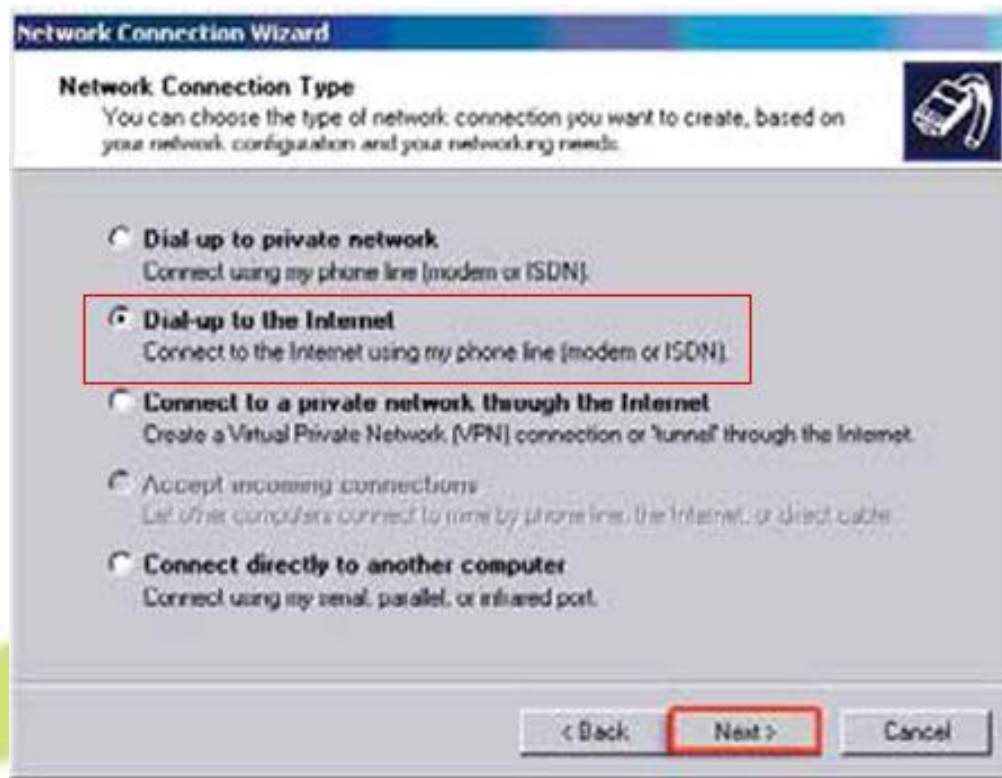
- a) Click on **Start**
- b) Click **Settings**
- c) Click on **Control Panel**
- d) Double click **Network and dial-up connections**



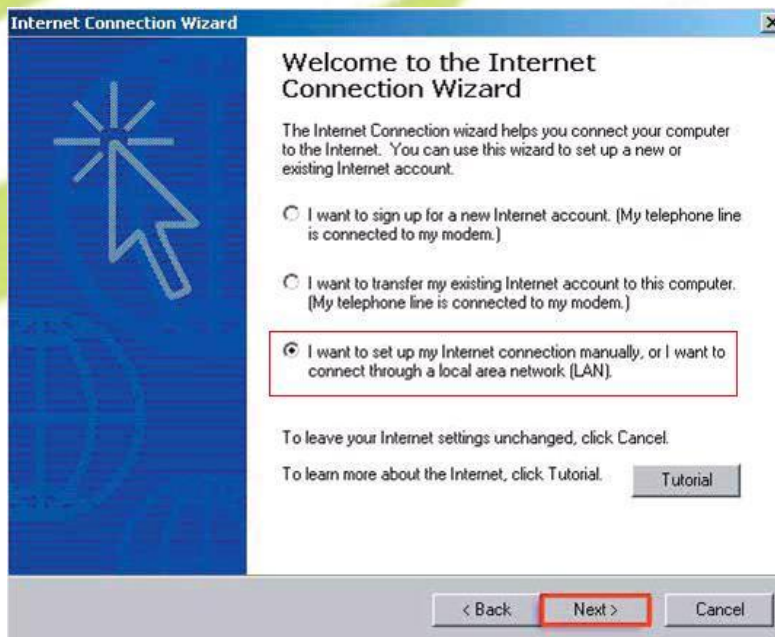
STEP 2: In Network connection Wizard click **Next** to continue



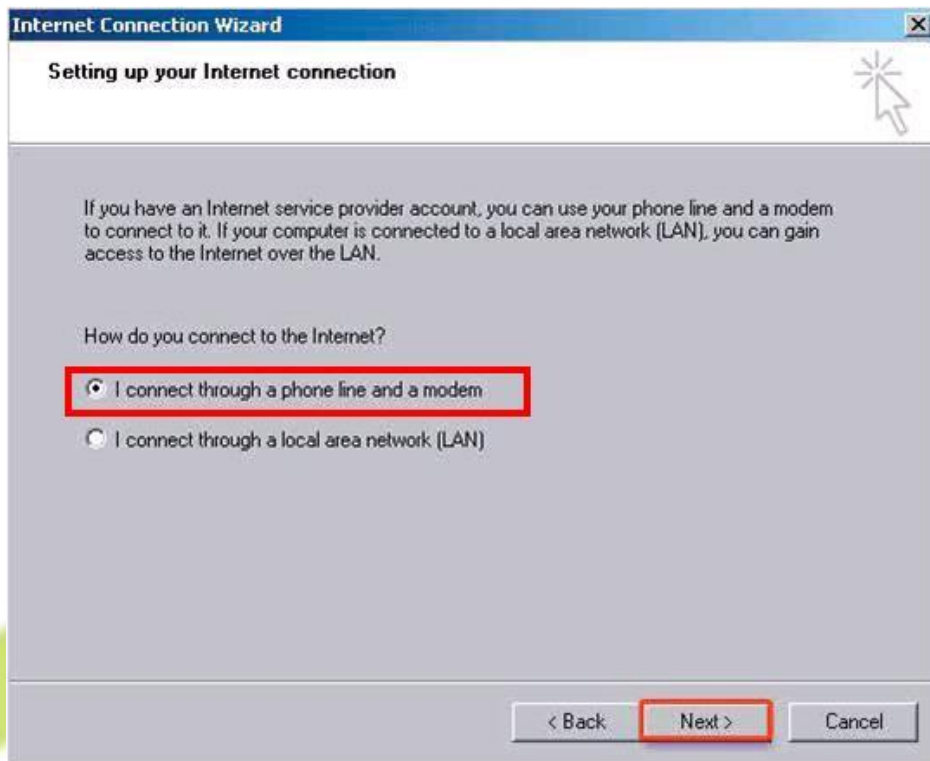
STEP 3: Select the dial-up to the Internet and click Next



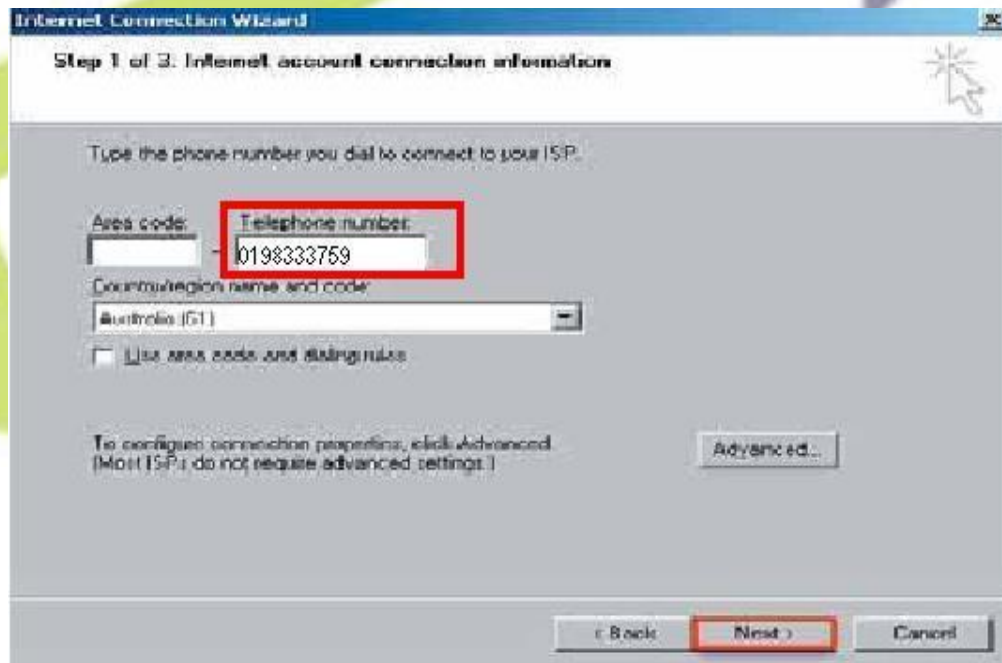
STEP 4: Select the option I want to setup connection manually and click Next



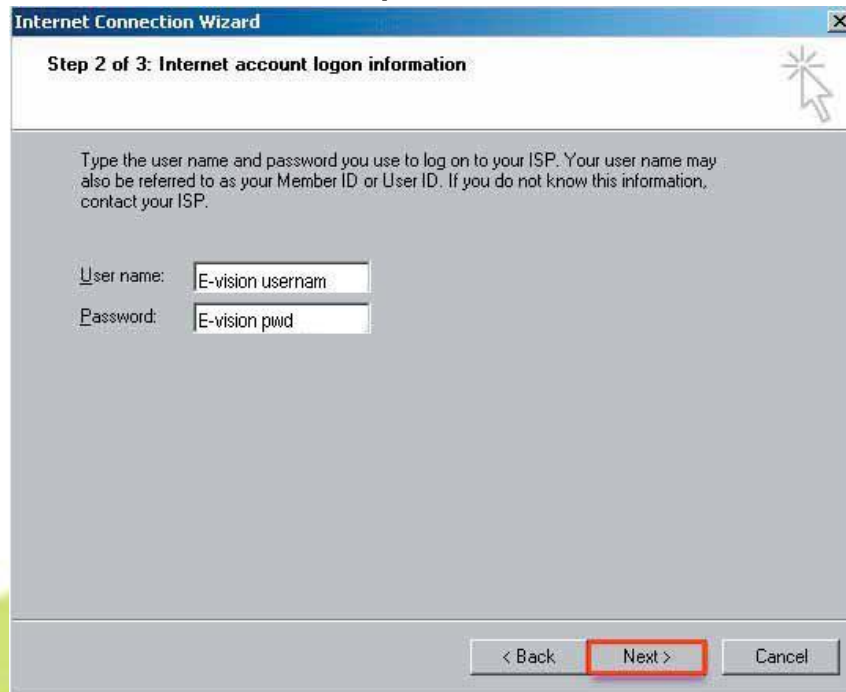
STEP 5: Select the option I connect through phone line and a modem and click Next



STEP 6: Type in your E-Vision Connection Number (0198333759) and click Next

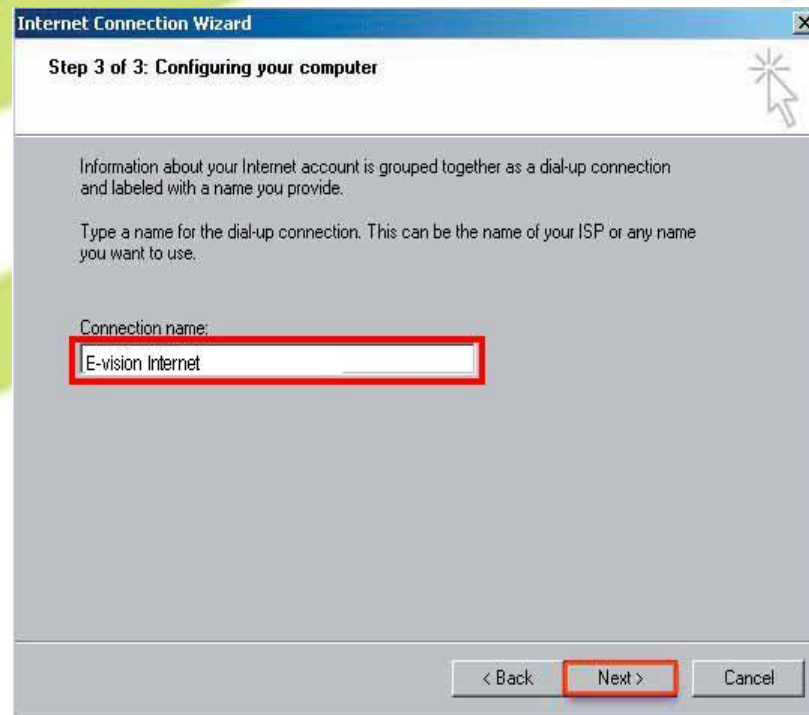


STEP 7: Enter your E-Vision Username and E-vision password provided and click Next (If you are not sure of the username and password contact E-vision Helpdesk)



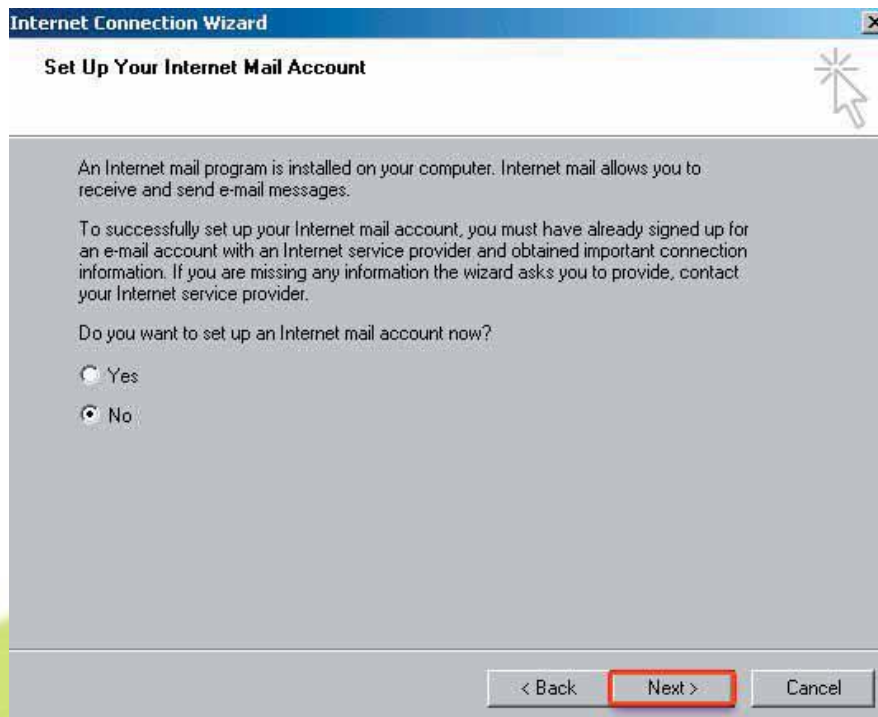
The screenshot shows the 'Internet Connection Wizard' window at 'Step 2 of 3: Internet account logon information'. The window title is 'Internet Connection Wizard'. The main text reads: 'Type the user name and password you use to log on to your ISP. Your user name may also be referred to as your Member ID or User ID. If you do not know this information, contact your ISP.' Below this text are two input fields: 'User name:' with the value 'E-vision usernam' and 'Password:' with the value 'E-vision pwd'. At the bottom right, there are three buttons: '< Back', 'Next >', and 'Cancel'. The 'Next >' button is highlighted with a red rectangle.

STEP 8: Type in your E-Vision Internet click Next

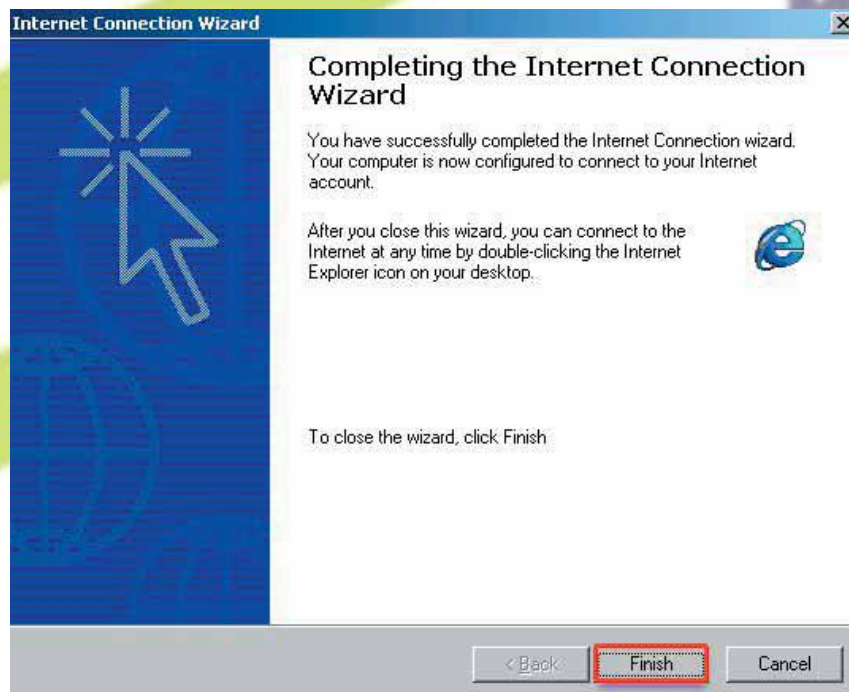


The screenshot shows the 'Internet Connection Wizard' window at 'Step 3 of 3: Configuring your computer'. The window title is 'Internet Connection Wizard'. The main text reads: 'Information about your Internet account is grouped together as a dial-up connection and labeled with a name you provide. Type a name for the dial-up connection. This can be the name of your ISP or any name you want to use.' Below this text is a label 'Connection name:' followed by an input field containing the text 'E-vision Internet'. The input field is highlighted with a red rectangle. At the bottom right, there are three buttons: '< Back', 'Next >', and 'Cancel'. The 'Next >' button is highlighted with a red rectangle.

STEP 9: Select **No and click **Next****



STEP 10: Click **Finish to complete wizard.**



Congratulations! You have now set up your E-vision Account

Support Information

For any installation, configuration or billing enquiries please call: **1300 309 540**

Or email your queries to **support@e-vision.com.au**

Or visit **www.evision.com.au**.