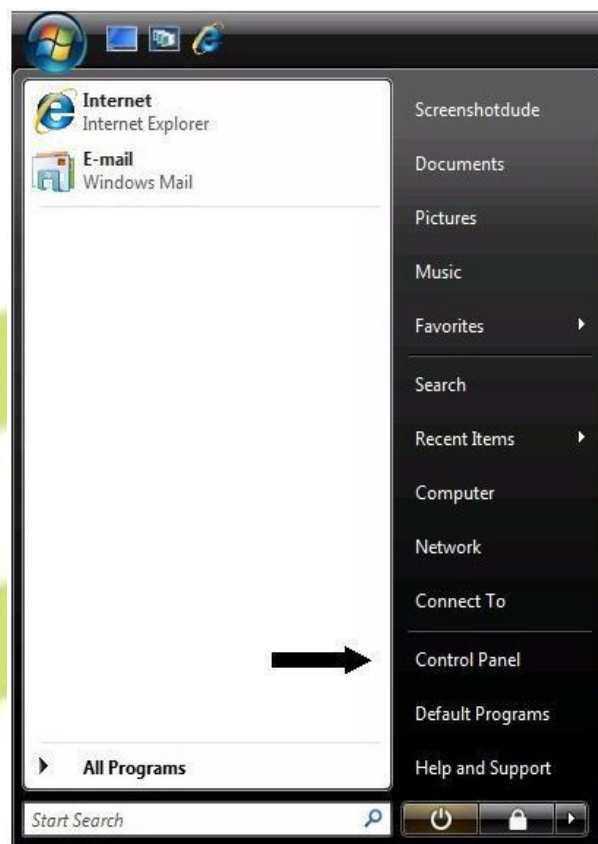


Setup Guide for E-Vision Dial up Connection for Windows Vista

STEP 1:

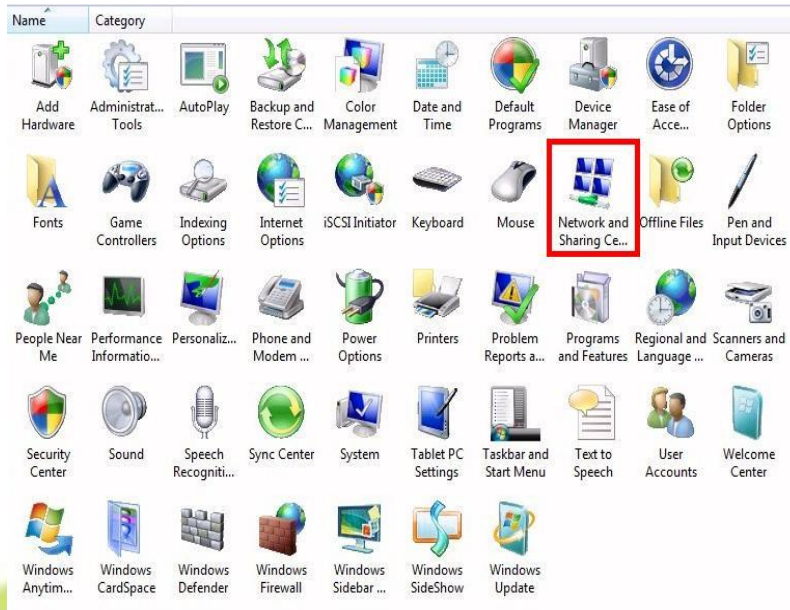
- a) Click on **Start**
- b) Click on **Control Panel**



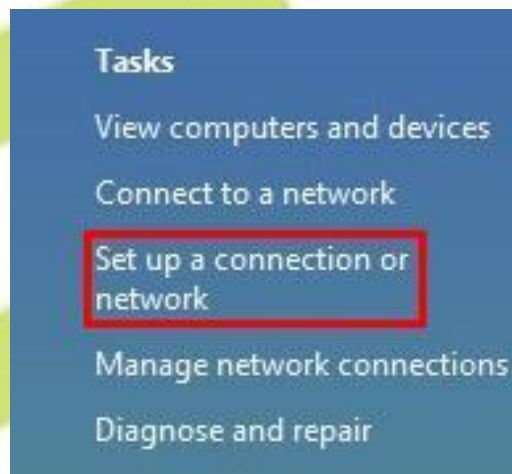
STEP 2: Click on switch to classic view on left hand side



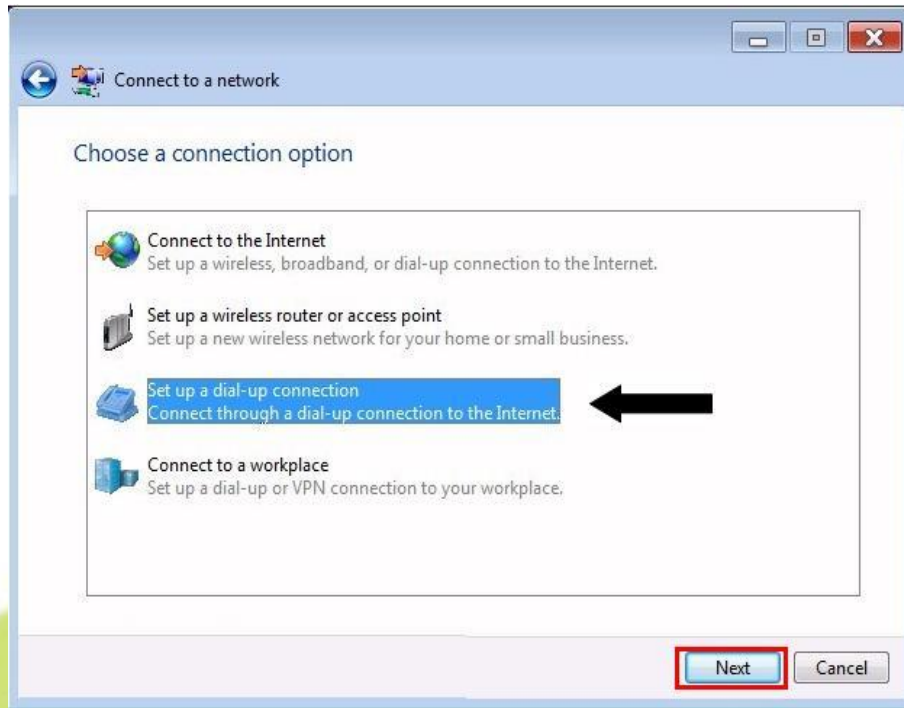
STEP 3: Click on Network and sharing Center



STEP 4: On your left hand side, click on Set up a Connection or Network



STEP 5: On the Connect to Network window choose Select **Set up a dial-up Connection and click **Next****



STEP 6: Type in your **E-Vision Dial-up Phone Number (0198333759), **E-vision username** and **Password** provided and **Connection name** as **E-vision Internet****

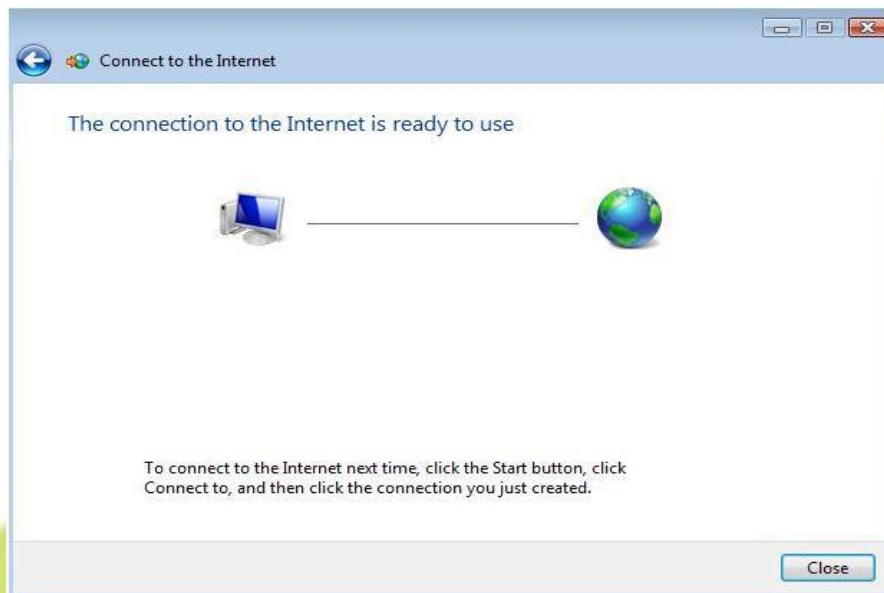


Tip: Remember password should be ticked

STEP 7: Click **Connect to complete Connection.**

Hint: Before you click connect make sure the **phone cable is plugged in the modem.**

When successfully connected you see the following screen.



Congratulations! You have now set up your E-vision Account

Support Information

For any installation, configuration or billing enquiries please call: **1300 309 540**

Or email your queries to **support@e-vision.com.au**

Or visit **www.evision.com.au**.