

Setup Guide for E-Vision Dial up Connection for Windows XP

STEP 1:

- a) Click on **Start**
- b) Click on **Control Panel**

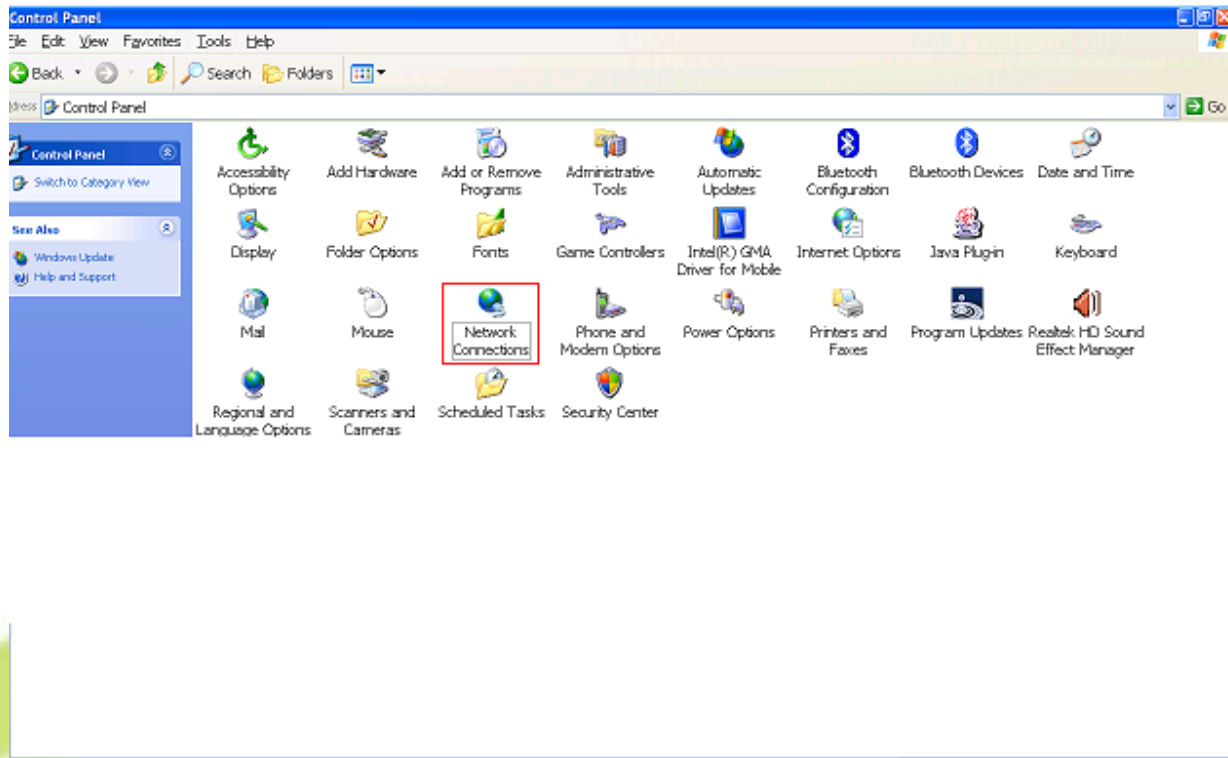


STEP 2: Click on switch to classic view on left hand side

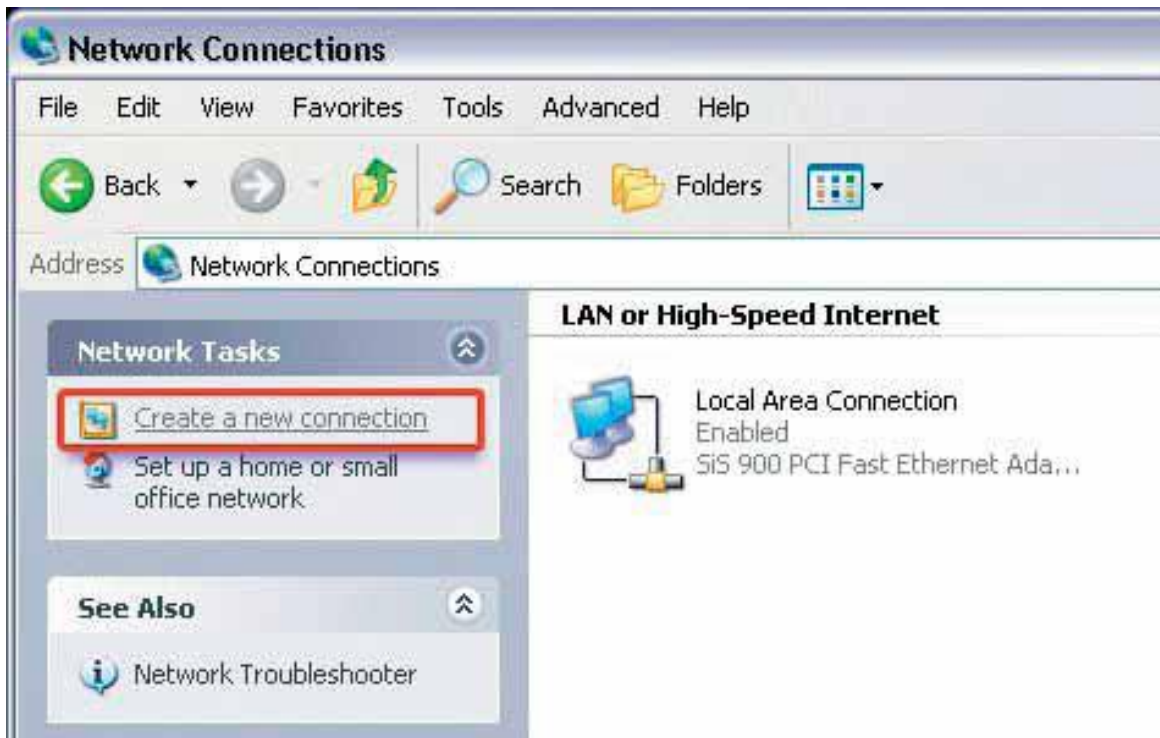
Note: If you are already in classic view than follow next STEP.



STEP 3: Double Click on Network connection



STEP 4: On left hand side click on Create a new connection



STEP 5: New Connection wizard comes up click **Next to proceed**



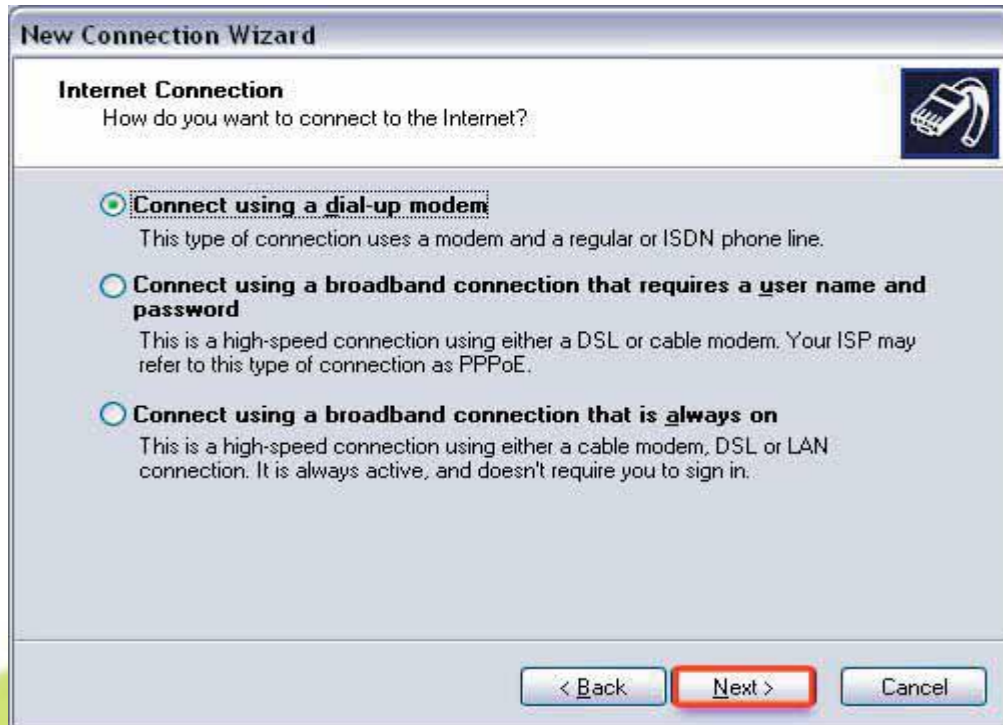
STEP 6: Select **Connect to Internet**



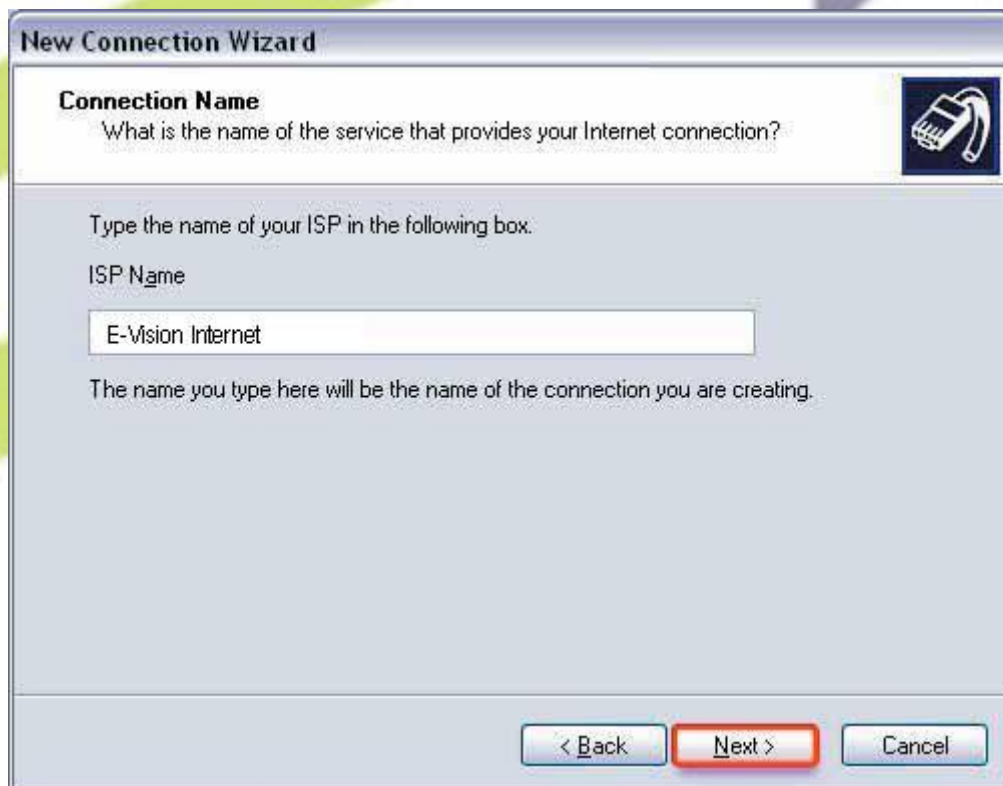
STEP 7: Select **Set up my connection manually and then click **Next** to continue**



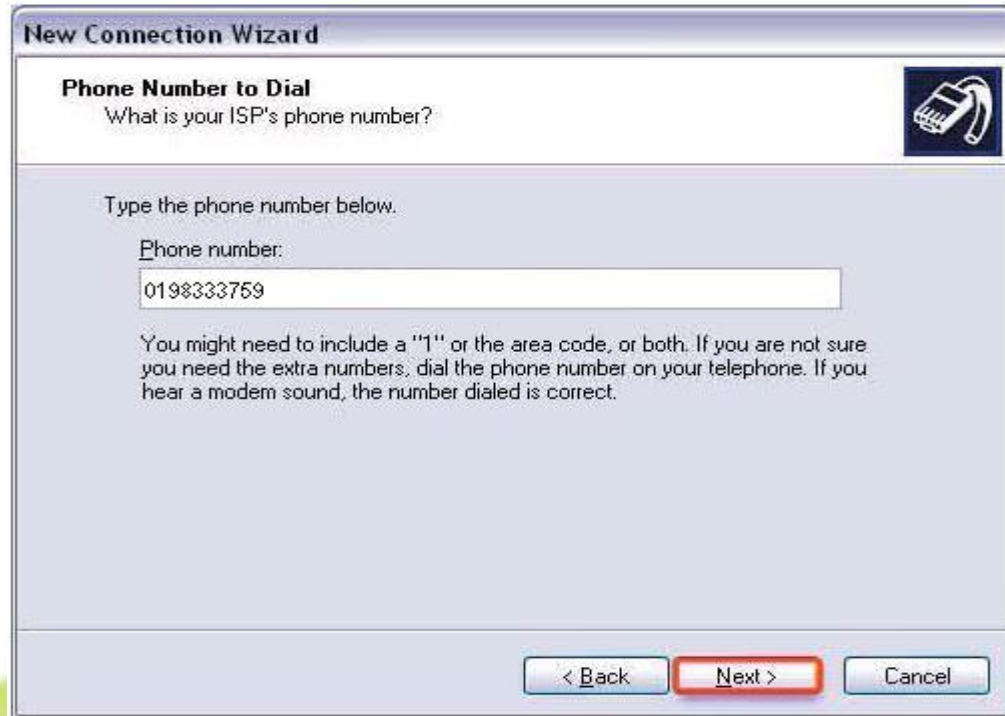
STEP 8: Select **Connect using a dial-up modem**



STEP 9: In the ISP name type **in E-vision Internet and then click **Next****



STEP 10: Type in your E-Vision Connection Number (0198333759) and click Next



New Connection Wizard

Phone Number to Dial
What is your ISP's phone number?

Type the phone number below.

Phone number:
0198333759

You might need to include a "1" or the area code, or both. If you are not sure you need the extra numbers, dial the phone number on your telephone. If you hear a modem sound, the number dialed is correct.

< Back **Next >** Cancel

STEP 11: Select Anyone's use to give access to all users on computer and click Next



New Connection Wizard

Connection Availability
You can make the new connection available to any user or only to yourself.

A connection that is created for your use only is saved in your user account and is not available unless you are logged on.

Create this connection for:

Anyone's use
 My use only

< Back **Next >** Cancel

STEP 12: Enter your E-Vision Username and E-vision password provided and click Next (If you are not sure of the username and password contact E-vision Helpdesk)



New Connection Wizard

Internet Account Information
You will need an account name and password to sign in to your Internet account.

Type an ISP account name and password, then write down this information and store it in a safe place. (If you have forgotten an existing account name or password, contact your ISP.)

User name:

Password:

Confirm password:

Use this account name and password when anyone connects to the Internet from this computer

Make this the default Internet connection

< Back Next > Cancel

STEP 13: Tick Add shortcut to this connection to my desktop and click Finish to Complete Setup



New Connection Wizard

Completing the New Connection Wizard

You have successfully completed the steps needed to create the following connection:

E-vision Internet

- Make this the default connection
- Share with all users of this computer
- Use the same user name & password for everyone

The connection will be saved in the Network Connections folder.

Add a shortcut to this connection to my desktop

To create the connection and close this wizard, click Finish.

< Back Finish Cancel

Congratulations! You have now set up your E-vision Account

Support Information

For any installation, configuration or billing enquiries please call: **1300 309 540**

Or email your queries to **support@e-vision.com.au**

Or visit **www.evision.com.au**.