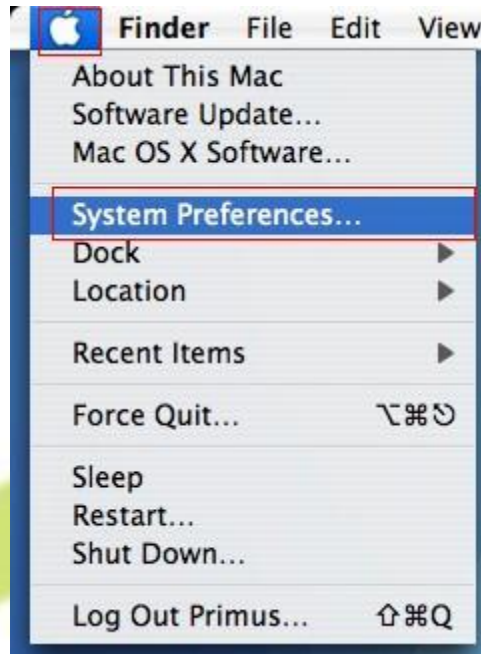


Setup Guide for E-Vision Dial up Connection for MAC OSX 10.4

STEP 1: Click on **Apple Menu** and click **System Preferences**



STEP 2: In System Preferences click **Network**.



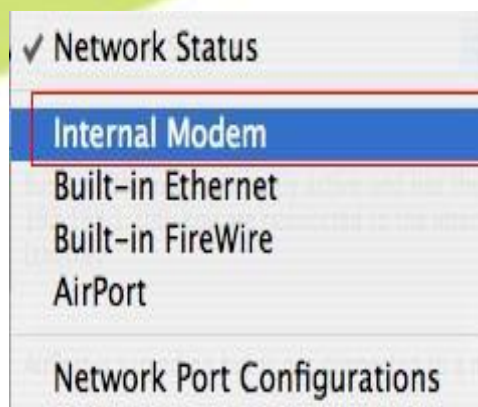
STEP 3: In Locations click **New Location...**



STEP 4: Name your new location **E-vision dialup** and click **ok**

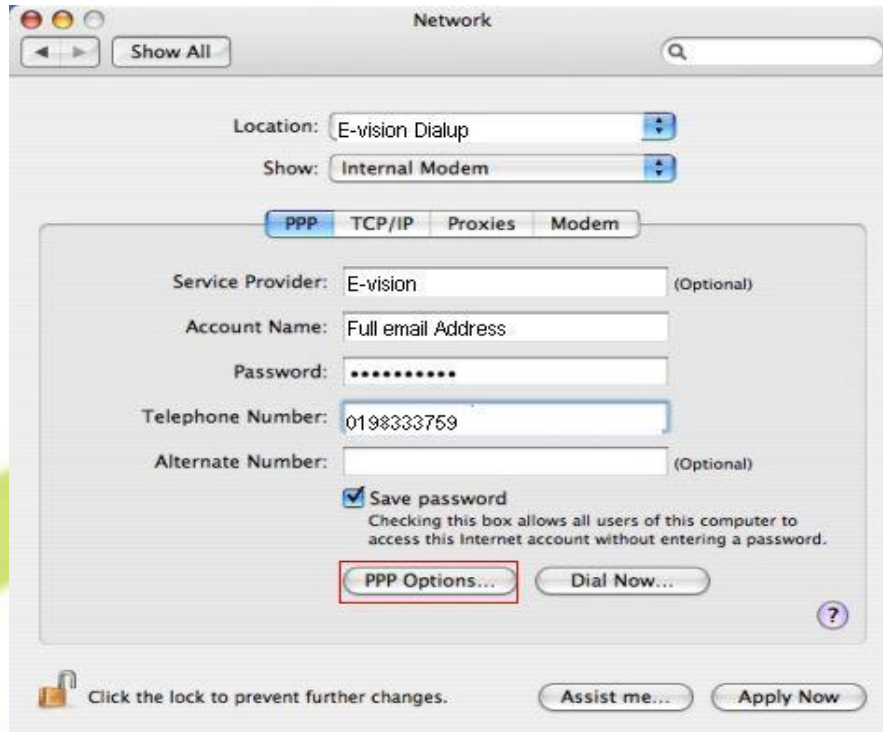


STEP 5: Click on **show** drop down menu and select **internal modem**



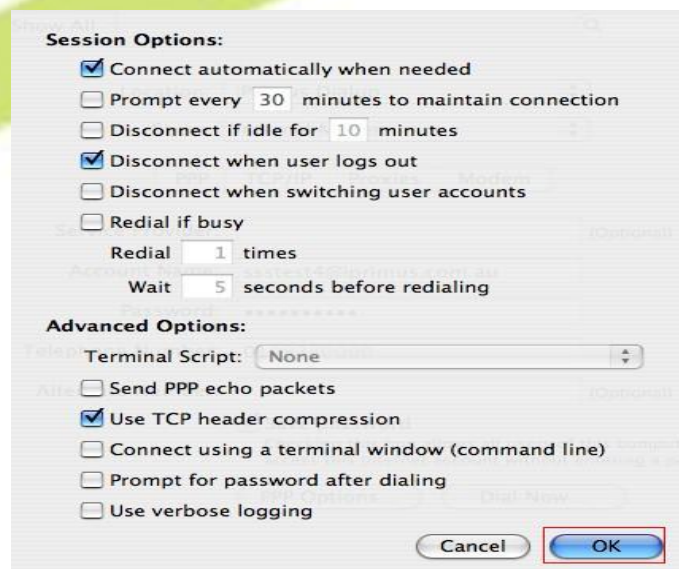
STEP 6: Select PPP tab fill in the following Details

- a) Type **E-vision** in the **Service Provider** field
- b) Type your **login Address**(eg:johnsmith@evision.net.au) in **the Account Name** field
- c) Type your **Password** in the Password field
- d) Type **0198333759** in the Telephone Number field
- e) Click **PPP options**



STEP 7: In the Session Options make sure the following box are ticked.

- a) **Connect automatically when needed**
- b) **Disconnect when user logs out**
- c) **Use TCP header compression and click ok**



STEP 8: Click on the Modem tab and make sure the following are selected
In the modem tab select **Apple internal modem (v.92)** and tick the following
Enable error correction and compression in modem and **Wait for dial tone before dialing**
Next Set **Dialing to tone** and **Sound to On** and select **Show modem in the status menu bar** and
click **Apply Now**.

NOTE: The modem type may differ on selected computers, please check with your computer supplier if you are unsure.



STEP 9: Click on Red dot on right hand top corner



Congratulations! You have now set up your E-vision Account.

Support Information

For any installation, configuration or billing enquiries please call: **1300 309 540**

Or email your queries to **support@e-vision.com.au**

Or visit **www.evision.com.au**.